

# Building markets for waste innovation

Malawi Waste Management Consortium for knowledge sharing around closed-loop waste management entrepreneurship

SEED Practitioner Labs Policy Prototyping – Malawi 2019



**SEED**

promoting entrepreneurship for sustainable development



## Background

In Malawi, waste generation is expected to triple by 2050<sup>1</sup>. While the environmental concern for the management of urban waste is growing, Malawi's waste management system is still undeveloped and municipal budget for waste management are lacking. Furthermore, people are unable to afford the waste disposal services which are available – though heavily concentrated in Lilongwe and Blantyre. Due to gaps in waste management value chains and a lack of viable markets for waste management, the sector's opportunities for reliable employment and the economic value of waste innovation is often overlooked. Despite multiple opportunities and some best practice examples for waste management innovation, the sector lacks entrepreneurial interest and markets for closed-loop business models as well as business development services that build the capacities of these growing enterprises.

In light of these major waste and development challenges and the great potential of entrepreneurship to offer solutions, Malawi requires multi-stakeholder action to develop and support market-driven solutions for effective waste management and incorporation of waste into innovative production cycles as a resource

## Prototype Overview

The proposed **Malawi Waste Management Consortium** supports the development of waste management markets and the alignment of policy around green and inclusive development approaches with entrepreneurial waste management solutions. The consortium aims to improve access to information on the current government policy for waste management and guidance for aspiring waste innovators by:

**Establishing a consortium of waste management experts and ecosystem actors** to improve knowledge sharing and collaboration between active and aspiring entrepreneurs, enterprise support institutions, intermediaries and policymakers through regular meetings and an online forum for knowledge sharing.

**Focus:**

Climate Change Mitigation

**Ecosystem Impact:**

Access to Markets; Research, Development and Innovation

**Policy instrument**

International Conservation and

**development hosted by:**

Clean up Management (ICCM)

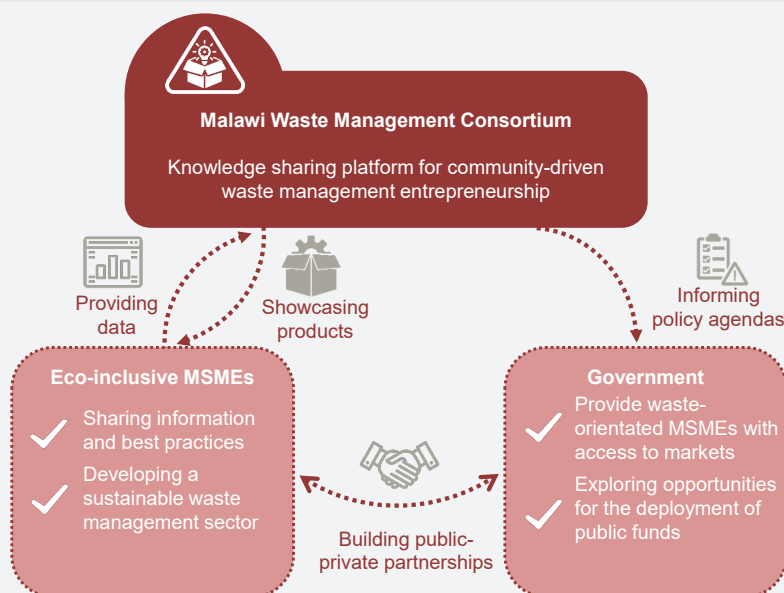
## Policy Implications

The consortium's integrated approach to knowledge sharing and capacity building endeavours to influence policy makers and investors to better understand the benefits of sustainable waste management and align public sector activities and government support behind expanding opportunities for eco-inclusive entrepreneurship<sup>2</sup>.

**Informing policy by allowing greater accessibility of information** to government and the public on the current status of employment (formal and informal) within waste management value chains as well as best practice examples of innovation by small and growing enterprises across value chains.

**Drafting policies for waste management** to expand on initial governmental efforts to regulate the waste management sector (largely through establishing City Council Waste Transfer Stations) and to ensure alignment of sector development with green and inclusive development agendas by supporting closed-loop and socially inclusive business development.

**Developing a digital platform and online marketplace** to collect comprehensive statistical data from enterprises and intermediaries on the current status of waste enterprises in Malawi and offer opportunities to enterprises and aspiring entrepreneurs to access capacity building support and market information to support the growth of waste management value chains.



## Key Features

The Malawi Waste Management Consortium aims to improve coordination among private and public sector actors, including policy makers, eco-inclusive enterprises and intermediaries through:

- 1. Sector scoping activities to collect information** and build a better picture of who is active within (formal and informal) waste management in Malawi.
- 2. Publicly mapping the location and reach of waste markets** to support the greater coordination of waste actors and alignment of government initiatives with support for innovative solutions that move beyond waste collection to the whole value chain.
- 3. Face-to-face meetings offered by the consortium** primarily through ad-hoc events and policy dialogues will encourage collaboration and cultivate partnership-building opportunities between government, eco-inclusive enterprises and others.

- **Involving public sector actors directly as Consortium members** to inform policy-makers about the potential of eco-inclusive, closed-loop business models across waste value chains.
- **Exploring opportunities for the deployment of public funds** (and support with leveraging private sector funds) to develop value chains for waste management entrepreneurs, from collection to processing and remanufacturing of waste as a resource.
- **Providing access to information on the current government policy and taking measures to better regulate** waste management and private sector development as the consortium builds markets for waste management in alignment with existing development agendas.

These actions must extend beyond major cities will support the expansion of existing governmental activities such as the recent plastic bag ban and the establishment of municipal Waste Transfer Stations across Malawi.

## Benefits to Eco-Inclusive Entrepreneurship

The consortium will combine data and information collection on the status of the waste management sector, best practice examples of socially inclusive and closed-loop waste management entrepreneurship. This consortium will create new opportunities for waste management solutions in Malawi, indicating to investors and government that waste innovation can be profitable, as well as socially inclusive and green. Aspiring entrepreneurs and established enterprises will benefit from the consortium's collaborative events and processes for sharing knowledge and cultivating new opportunities for supporting waste innovation through policy

## Role of Government

Currently, waste innovation does not feature in any government sanitation programmes. In order to strengthen government action (at all levels) in delivering waste management solutions this policy instrument advocates:

## Key Contributor



**International Conservation and Clean up Management (ICCM) Malawi** aims at reducing, reusing and recycling waste through holistic waste management and innovation, capacity building and environmental education.

SEED Practitioner Labs Policy Prototyping work with policymakers, eco-inclusive enterprises and intermediaries over a multi-step collaborative process to design policy instruments which increase access to and improve the quality of support mechanisms for socially inclusive and environmentally sustainable enterprises looking to scale their environmental, social and economic impacts

1. Kaza, S., Yao, L., Bhada-Tata, P., Van Woerden, F. (2018). What a Waste 2.0: A Global Snapshot of Solid Waste Management to 2050. Urban Development Series. Washington, DC: World Bank.  
2. Eco-inclusive enterprises are micro-, small- and medium-sized enterprises (MSMEs) that deliver combined environmental, social and economic benefits.

